

POWERZONE[®] CONTROLLER

GENERAC[®]
**INDUSTRIAL
POWER**



ControlsMatter.com

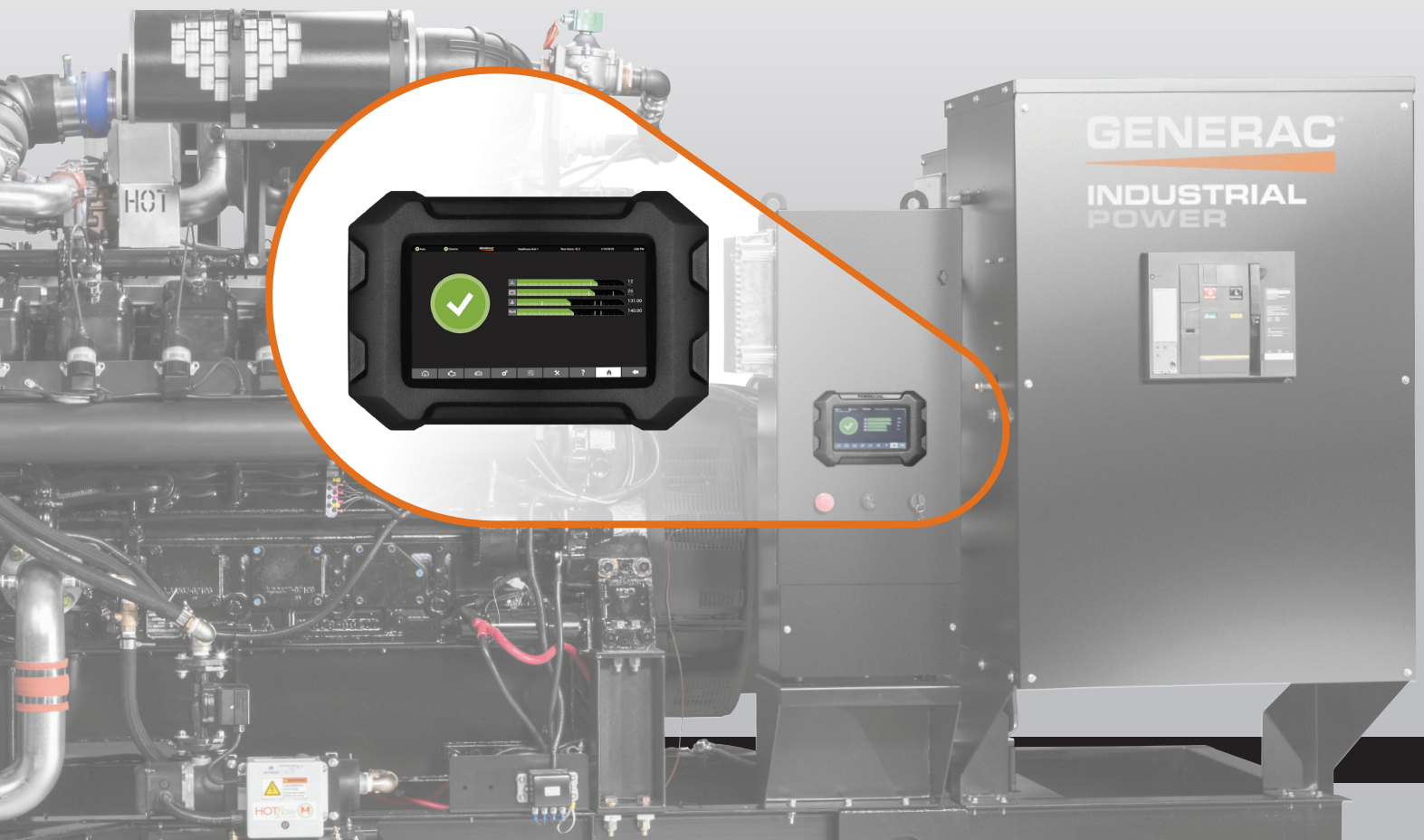
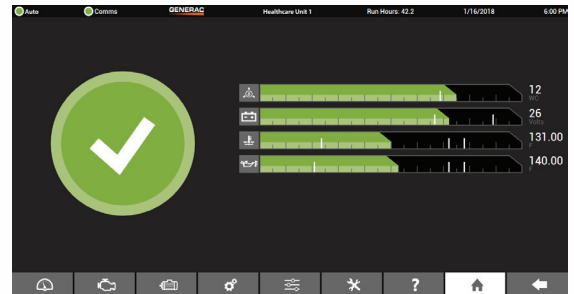
POWERZONE[®] CONTROLLER

At its most basic, a generator is an engine and an alternator that together produce electricity. But what if that hardware could think? Could communicate? It can, thanks to its controller—the power that controls the brawn. That’s why generator controls matter. And Generac’s Power Zone[®] controller makes our generators smarter and more reliable.

So how does the Power Zone controller think? For starters, it can manage paralleling, automatic transfer switches, and manage the load when the gen-set is installed in an Modular Power System (MPS) configuration. No additional switchgear or paralleling controllers are required. And even in a single-node situation, the Power Zone works seamlessly with Generac automatic transfer switches for complete system integration.

But it is the Power Zone’s “communicative” nature that really sets it apart. Its 7-inch color touchscreen display operates like a smartphone app. Let the Power Zone give you all the details you need about the gen-set, from general system status to faults and alarms. Scalable and configurable I/O amplifies the controller’s voice, giving you both remote monitoring and remote generator controls, all at no additional cost. And because service techs can also keep an eye on the generator, maintenance becomes a proactive — not reactive — proposition.

Generac’s Power Zone Controller. Smarter. More intuitive.



FEATURES



Remote monitoring and customization control with no additional cost

Many controllers offer remote monitoring and the ability to customize the controls as part of an annual subscription service and require the purchase of additional third-party hardware. The Power Zone has built in Wi-Fi, Bluetooth, and LAN connections enabling the Power Zone controller to be easily integrated into complex systems requiring more advanced generator set monitoring.



Improved diagnostics and new onboard self-help manuals

A self-help solution with built-in manuals provides critical information on demand to help reduce maintenance and repair times and improve overall performance. Additionally, modules are available to provide local and/or remote annunciation of gen-set operating status, such as a low oil pressure or high coolant temperature.



Connectivity and easy-to-use operator interface

Power Zone has built in Wi-Fi, Bluetooth, and LAN connections, enabling generator monitoring from any internet enabled device while in the comfort of your vehicle. Onboard the generator, users interface with the Power Zone's large 7-inch graphical display, making it easy to use while providing access to a wide range of data.



Improved reporting and log history

The Power Zone archives critical engine and alternator data before and after a fault occurs, making root cause analysis easier to identify. Power Zone collects historical data, such as generator date/run-time, operating hours and kWh produced.



Make maintenance a proactive proposition

Power Zone provides user access to generator status, including immediate alarm and fault notification. It prioritizes complete system fault information and translates it into clear, actionable notifications that are immediately routed, allowing proactive service scheduling to avoid downtime. Notifications can also be sent to your servicing dealer to make maintenance and repair even quicker.



Expandable and flexible

Designed for the future, Power Zone has the capability of expanding an MPS installation to an unlimited number of generators as your power requirements increase. Configurable inputs, outputs, and an integrated logic controller offer the flexibility to meet additional customer requirements.

*Same graphical interface
on any device. (Right)*



POWERZONE[®] CONTROLLER

COMPETITION COMPARISON



	GENERAC	CATERPILLAR	CUMMINS	KOHLER	MTU	COMPAP	DEEP SEA
Standard Features	Power Zone	EMCP 4.4	PCC 3.3	Decision Maker 8000	Basler DGC-2020HD	IS-NTC	8610/8620
Operator Interface	Color Resistive Touch Screen	Mono-LCD	Mono-LCD	TFT Color Display	Mono-LCD	TFT Color Display	Mono-LCD
On-Board Manuals	✓	✗	✗	✗	✗	✗	✗
Wi-Fi	✓	✗	✗	✗	✗	✗	✗
Bluetooth	✓	✗	✗	✗	✗	✗	✗
Built in Web Server	✓	✗	✗	✗	✗	✗	✗
Customer RJ45 Port	1	1	✗	1	1	1	1
E-Mail Notifications	✓	✗	✗	0	✗	0	✗
RS-485 (Modbus RTU)	✓	✓	✓	✓	✓	✓	✓
Ethernet (Modbus TCP)	✓	✓	✗	✓	✓	✓	✓
"Pre-Event" History	✓	✗	✗	✗	✗	✓	✗
Max. Number of Gens	Unlimited	8	Unlimited	32	32	32	32

O = Optional

GENERAC[®]

Generac Power Systems, Inc.
S45 W29290 Hwy. 59, Waukesha, WI 53189
generac.com 1-888-GENERAC (1-888-436-3722)

00000000 01/2018
©2018 Generac Power Systems, Inc. All Rights Reserved.
Specifications are subject to change without notice.