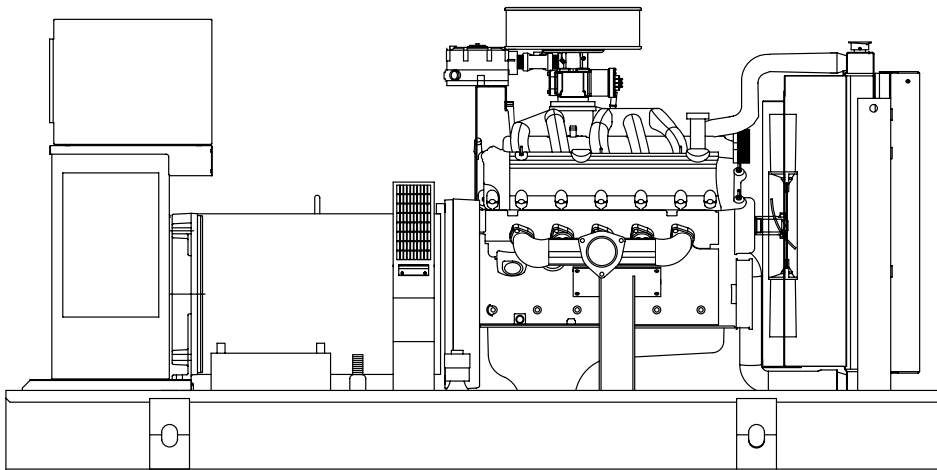


SG070

Liquid Cooled Gas Engine Generator Sets

Standby Power Rating
70KW 60 Hz / 70KVA 50 Hz

Prime Power Rating
56KW 60 Hz / 56KVA 50 Hz



Power Matched
GENERAC 6.8 GN ENGINE
Naturally Aspirated

FEATURES

- **INNOVATIVE DESIGN & PROTOTYPE TESTING** are key components of GENERAC'S success in "IMPROVING POWER BY DESIGN." But it doesn't stop there. Total commitment to component testing, reliability testing, environmental testing, destruction and life testing, plus testing to applicable CSA, NEMA, EGSA, and other standards, allows you to choose GENERAC POWER SYSTEMS with the confidence that these systems will provide superior performance.
- **TEST CRITERIA:**
 - ✓ PROTOTYPE TESTED
 - ✓ SYSTEM TORSIONAL TESTED
 - ✓ ELECTRO-MAGNETIC INTERFERENCE
 - ✓ NEMA MG1 EVALUATION
 - ✓ MOTOR STARTING ABILITY
 - ✓ SHORT CIRCUIT TESTING
 - ✓ UL 2200 COMPLIANCE AVAILABLE
- **SOLID-STATE, DIGITAL, FREQUENCY COMPENSATED VOLTAGE REGULATION.** This state-of-the-art power maximizing regulation system is standard on all Generac models. It provides optimized FAST RESPONSE to changing load conditions and MAXIMUM MOTOR STARTING CAPABILITY by electronically torque-matching the surge loads to the engine.
- **SINGLE SOURCE SERVICE RESPONSE** from Generac's dealer network provides parts and service know-how for the entire unit, from the engine to the smallest electronic component. You are never on your own when you own a GENERAC POWER SYSTEM.
- **GENERAC TRANSFER SWITCHES, SWITCHGEAR AND ACCESSORIES.** Long life and reliability is synonymous with GENERAC POWER SYSTEMS. One reason for this confidence is that the GENERAC product line includes its own transfer systems, accessories, switchgear and controls for total system compatibility.

GENERAC[®]
POWER SYSTEMS, INC.

APPLICATION & ENGINEERING DATA

SG070

GENERATOR SPECIFICATIONS

TYPE	4-Pole, Synchronous
ROTOR INSULATION.....	Class H
STATOR INSULATION.....	Class H
TOTAL HARMONIC DISTORTION.....	<3.5%
TELEPHONE INTERFERENCE FACTOR (TIF)	<50
ALTERNATOR OUTPUT LEADS 3 PHASE	12 wire
BEARINGS.....	Sealed Ball
COUPLING.....	Direct
LOAD CAPACITY (STANDBY RATING).....	70 kW
EXCITATION SYSTEM.....	PMG or Brushless

NOTE: Generator rating and performance in accordance with ISO8528-5, BS5514, SAE J1349, ISO3046, and DIN6271 standards.

VOLTAGE REGULATOR

TYPE	Full Digital
SENSING	3 Phase
REGULATION.....	± 1/4%
FEATURES.....	Built into H-100 Control Panel V/F Adjustable Adjustable Voltage and Gain

GENERATOR FEATURES

- Revolving field heavy duty generator
- Quiet drive coupling
- Operating temperature rise 120 °C above a 40 °C ambient
- Insulation is Class H rated at 150 °C rise
- All prototype models have passed three phase short circuit testing

CONTROL PANEL FEATURES

- TWO FOUR LINE LCD DISPLAYS READ:
 - Voltage (all phases)
 - Power factor
 - kVAR
 - Engine speed
 - Run hours
 - Fault history
 - Coolant temperature
 - Low oil pressure shutdown
 - Overvoltage
 - Low coolant level
 - Not in auto position (flashing light)
 - ATS selection
 - Current (all phases)
 - kW
 - Transfer switch status
 - Low fuel pressure
 - Service reminders
 - Oil pressure
 - Time and date
 - High coolant temperature shutdown
 - Overspeed
 - Low coolant level
 - Exercise speed
- INTERNAL FUNCTIONS:
 - I²T function for alternator protection from line to neutral and line to line short circuits
 - Emergency stop
 - Programmable auto crank function
 - 2 wire start for any transfer switch
 - Communicates with the Generac HTS transfer switch
 - Built-in 7 day exerciser
 - Adjustable engine speed at exerciser
 - RS232 port for GenLink® control
 - RS485 port remote communication
 - Canbus addressable
 - Governor controller and voltage regulator are built into the master control board
 - Temperature range -40 °C to 70 °C

ENGINE SPECIFICATIONS

MAKE	Generac
MODEL.....	V Type
CYLINDERS.....	10
DISPLACEMENT.....	6.8 Liter
BORE.....	3.55
STROKE.....	4.17
COMPRESSION RATIO.....	9:1
INTAKE AIR SYSTEM.....	Naturally Aspirated
VALVE SEATS.....	Hardened
LIFTER TYPE.....	Hydraulic

GOVERNOR SPECIFICATIONS

TYPE	Electronic
FREQUENCY REGULATION.....	Isochronous
STEADY STATE REGULATION.....	± 0.25%
All functions are factory preset.	
Individual parameter adjustments can be made via GenLink®.	

ENGINE LUBRICATION SYSTEM

OIL PUMP.....	Gear
OIL FILTER.....	Full flow spin-on cartridge
CRANKCASE CAPACITY.....	6 Quarts

ENGINE COOLING SYSTEM

TYPE.....	Closed
WATER PUMP.....	Belt driven
TYPE OF FAN.....	Pusher
FAN DIAMETER.....	22 inches
COOLANT HEATER.....	1500W 120V

FUEL SYSTEM

FUEL TYPE.....	Natural gas, propane vapor, liquid propane
CARBURETOR.....	Down Draft
SECONDARY FUEL REGULATOR.....	Standard
FUEL SHUT OFF SOLENOID.....	Standard
OPERATING FUEL PRESSURE.....	11" - 14" H ₂ O

ELECTRICAL SYSTEM

BATTERY CHARGE ALTERNATOR.....	12V 30 Amp
STATIC BATTERY CHARGER.....	12V 2 Amp, 10 Amp
RECOMMENDED BATTERY.....	Group 24F, 525CCA
SYSTEM VOLTAGE.....	12 Volts

SG070

OPERATING DATA

	STANDBY				PRIME			
	SG070				SG070			
	<u>N.G.</u>	<u>Rated AMP</u>	<u>L.P.</u>	<u>Rated AMP</u>	<u>N.G.</u>	<u>Rated AMP</u>	<u>L.P.</u>	<u>Rated AMP</u>
GENERATOR OUTPUT VOLTAGE/KW-60Hz								
120/240V, 1-phase, 1.0 pf	70	292	75	313	56	233	60	250
120/208V, 3-phase, 0.8 pf	70	243	75	260	56	194	60	208
120/240V, 3-phase, 0.8 pf	70	210	75	226	56	168	60	180
277/480V, 3-phase, 0.8 pf	70	105	75	113	56	84	60	90
600V, 3-phase, 0.8 pf	70	84	75	90	56	67	60	72
	NOTE: Consult your Generac dealer for additional voltages.							
GENERATOR OUTPUT VOLTAGE/KVA-50Hz								
110/220V, 1-phase, 1.0 pf	56	255	60	273	44.8	204	48	218
115/200V, 3-phase, 0.8 pf	70	202	75	217	56	162	60	173
100/200V, 3-phase, 0.8 pf	70	202	75	217	56	162	60	173
231/400V, 3-phase, 0.8 pf	70	101	75	108	56	81	60	87
480V, 3-phase, 0.8 pf								
	NOTE: Consult your Generac dealer for additional voltages.							
MOTOR STARTING KVA								
Maximum at 35% instantaneous voltage dip with standard alternator—50/60 Hz	240V		480V		240V		480V	
with optional alternator—50/60 Hz	137/165		161/193		137/165		161/193	
	175/210		211/254		175/210		211/254	
FUEL								
Fuel consumption—60 Hz—100% Load	<u>N.G.</u>		<u>L.P.</u>		<u>N.G.</u>	<u>L.P.</u>		
ft. ³ hr. / m ³ hr.	867 / 24.6		348 / 9.9		694 / 19.6		279 / 7.9	
Fuel consumption—50 Hz—100% Load								
ft. ³ hr. / m ³ hr.	694 / 19.6		279 / 7.9		555 / 15.7		223 / 6.3	
COOLING								
Coolant capacity	System - lit. (US gal.)	23.7 (6.3)			20 (5)			
	Engine - lit. (US gal.)	12.3 (3.3)			8 (2)			
	Radiator - lit. (US gal.)	11.4 (3.0)			12 (3)			
Coolant flow/min.	60 Hz - lit. (US gal.)	148 (39)			148 (39)			
	50 Hz - lit. (US gal.)	124 (33)			124 (33)			
Heat rejection to coolant	BTU/hr.	255,000			204,000			
Inlet air	60 Hz - m ³ /min.(cfm)	159 (5600)			159 (5600)			
	50 Hz - m ³ /min.(cfm)	132 (4667)			132 (4667)			
Max. operating air temp onto radiator*	°F	140			140			
Max. operating ambient temp*	°F	120			120			
Max. external pressure drop on radiator	in. H ₂ O	0.5			110			
COMBUSTION AIR REQUIREMENTS								
Flow at rated power	60 Hz - m ³ /min.(cfm)	6.0 (213)			4.9 (173)			
	50 Hz - m ³ /min.(cfm)	4.8 (169)			3.9 (137)			
EXHAUST								
Exhaust flow at rated output	60 Hz—m ³ /min.(cfm)	19 (679.5)			15.4 (544)			
	50 Hz - m ³ /min.(cfm)	15 (538.2)			12.2 (431)			
Max recommended back pressure	Kpa(Hg)	10 (2.9)			10 (2.9)			
Exhaust temp at rated output	°C (°F)	677 (1250)			619 (1146)			
Exhaust outlet size (2)	mm (in.)	64 (2.5)			64 (2.5)			
ENGINE								
Rated RPM	60 / 50 Hz	1800 / 1500			1800 / 1500			
HP at rated KW	60 / 50 Hz	107 / 85			87 / 69			
Piston speed	60 Hz - m/sec. (ft./min.)	6.3 (1250)			6.3 (1250)			
	50 Hz - m/sec. (ft./min.)	5.3 (1041)			5.3 (1041)			
BMEP	60 / 50 Hz - psi	113.1 / 107.5			91.9 / 87.2			
DERATION FACTORS								
Temperature								
	5% for every 10°C above - °C	25			25			
	2.77% for every 10°F above - °F	77			77			
Altitude								
	1.1% for every 100 m above - m	183			183			
	3.5% for every 1000 ft. above - ft.	600			600			

* Note: Values given are maximum temperatures to which power adjustments can be applied. Consult your Generac Power Systems representative if operating conditions exceed these maximums.

- High Coolant Temperature Automatic Shutdown
- Low Coolant Level Automatic Shutdown
- Low Oil Pressure Automatic Shutdown
- Overspeed Automatic Shutdown (Solid-state)
- Crank Limiter (Solid-state)
- Oil Drain Extension
- Radiator Drain Extension
- Factory-Installed Cool Flow Radiator
- Closed Coolant Recovery System
- UV/Ozone Resistant Hoses
- Rubber-Booted Engine Electrical Connections
- Fuel Lockoff Solenoid

- Secondary Fuel Regulator (N.G. and L.P.)
- Stainless Steel Flexible Exhaust Connection
- Battery Charge Alternator
- Battery Cables
- Battery Tray
- Vibration Isolation of Unit to Mounting Base
- 12 Volt, Solenoid-Activated Starter Motor
- Air Cleaner
- Fan Guard
- Control Console
- Electronic Governor

OPTIONS

■ OPTIONAL COOLING SYSTEM ACCESSORIES

- Radiator Duct Adapter
- 208/240V Coolant Heater

■ OPTIONAL FUEL ACCESSORIES

- Flexible Fuel Lines
- L.P. Liquid Withdrawal
- Automatic Gaseous Dual Fuel

■ OPTIONAL EXHAUST ACCESSORIES

- Single Exhaust Kit for Indoor Installations

■ OPTIONAL ELECTRICAL ACCESSORIES

- Battery Heater
- 2A Battery Charger
- 10A Dual Rate Battery Charger

■ OPTIONAL ALTERNATOR ACCESSORIES

- Alternator Upsizing To 130kW Brushless
- Alternator Strip Heater
- Alternator Tropicalization
- Main Line Circuit Breaker

■ CONTROL CONSOLE OPTIONS

- Digital Controller H100 (Bulletin 0172110SBY)

■ ADDITIONAL OPTIONAL EQUIPMENT

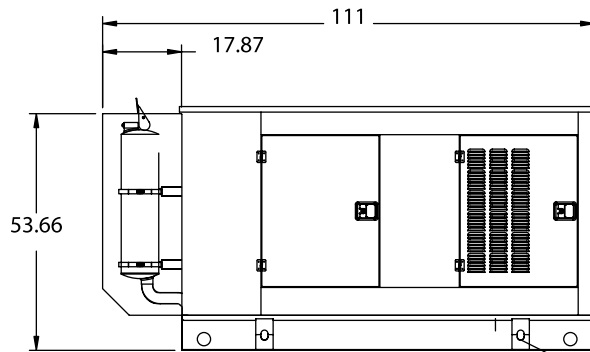
- Automatic Transfer Switch (GTS or HTS)
- 20 Light Remote Annunciator
- Remote Relay Panels
- Oil Make-Up System
- Oil Heater
- 5 Year Warranties
- Export Boxing
- GenLink® Communications Software

■ OPTIONAL ENCLOSURE

- Weather Protective
- Sound Attenuating
- Aluminum and Stainless Steel
- Enclosed Muffler

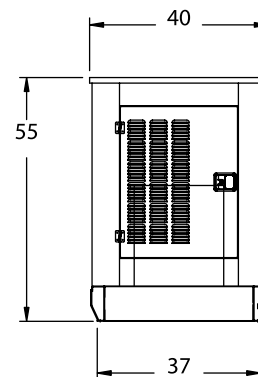
Distributed by:

Design and specifications subject to change without notice. Dimensions shown are approximate. Contact your Generac dealer for certified drawings. DO NOT USE THESE DIMENSIONS FOR INSTALLATION PURPOSES.



See Installation Drawings
0F5247 & 0F5248 for Specific Details

LIFTING
BRACKET



mm [in]

GENERAC® POWER SYSTEMS, INC. • P.O. BOX 8 • WAUKESHA, WI 53187

262/544-4811 • FAX 262/544-4851