

7.8 HP¹ GSH220

Commercial Replacement Generator Engine GSH220 Model #: 0051800 2006 MSRP \$525.00



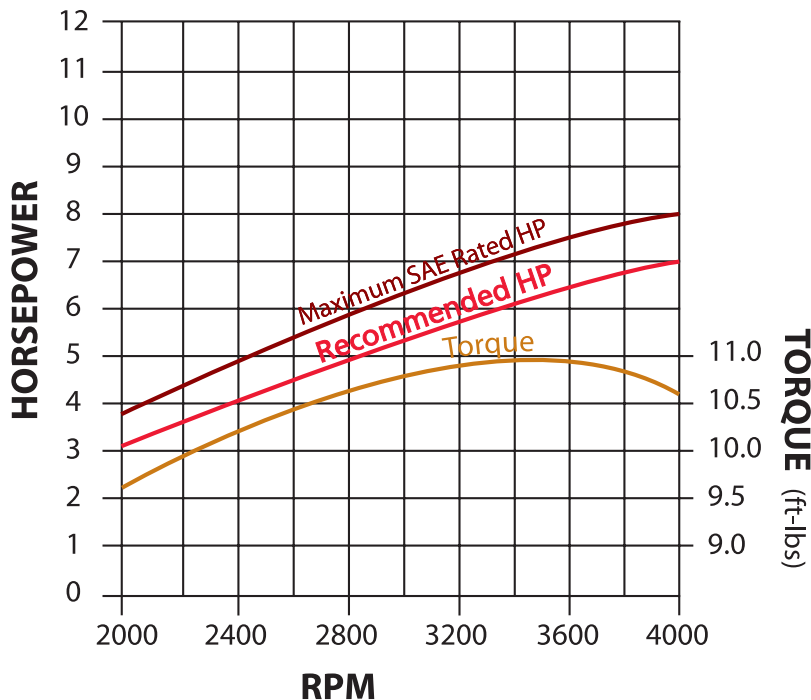
SPECIFICATIONS

- Horizontal Shaft
- Single Cylinder
- Air-Cooled
- OHVI Design

Displacement	216cc
Bore	75 mm / 2.95"
Stroke	49 mm / 1.93"
Compression Ratio	8.6:1
Lubrication	Full Pressure
Oil Capacity	0.80 L / 0.85 qts.
Weight	35 lbs.

Use to replace engine models EHC 00955-1, 2, 3; EHC 00952-1, 2, 3, and 004276-1 used on GPPI 3500 to 4000 watt generators.

PERFORMANCE CURVE



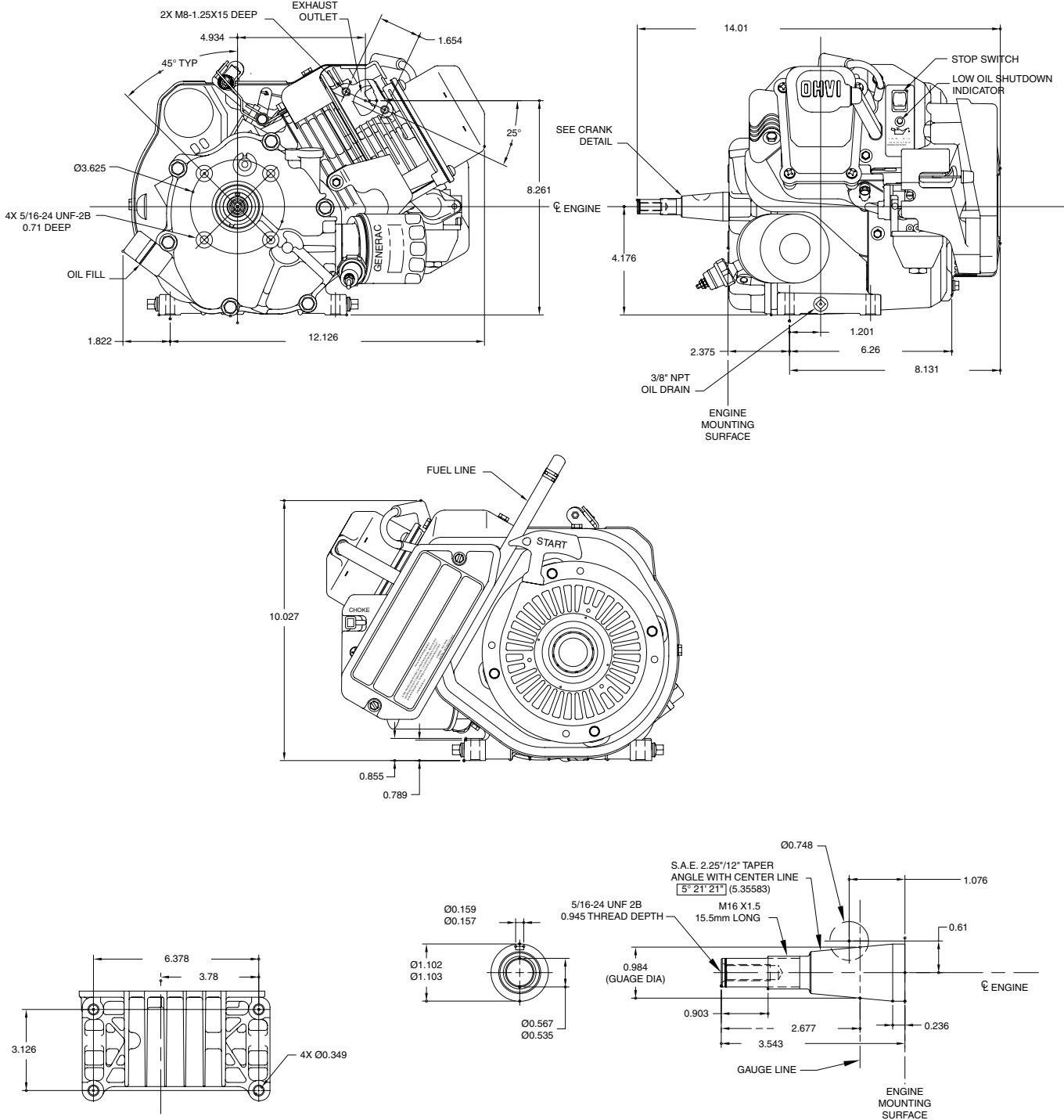
¹ Per SAE J1995

STANDARD FEATURES

- Full Pressure Lubrication (Automotive Type Gerotor Oil Pump)
- No-Tank
- Fixed Speed
- Automotive Type Oil Filter
- Low Oil Pressure Shutdown (LOPS) with Indicator Light
- Automatic Compression Relief
- Rocker ON/OFF Switch
- Recoil Start
- Cast Iron Liner
- Hardened Crankshaft Bearing Journals
- Hardened Camshaft
- Helical Cut Gears
- Hardened Valve and Valve Seats
- Cam Ground Piston Skirt (Elliptical)
- Chrome Compression Ring
- 3 Piece Automotive Type Oil Ring
- Electronic Ignition
- Pleated Paper Air Cleaner
- Poly Pre-cleaner
- Closed Loop Breather System
- No electric start (order separately)
- No muffler
- Black housing

GENERAC®

POWER SYSTEMS, INC.



GENERAC® POWER SYSTEMS, INC. • P.O. BOX 8 • WAUKESHA, WI 53187
 262/544-4811 • FAX 262/544-4851